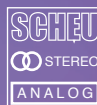


the magnificent SCHEU CELLO



SCHEU

The Scheu of Music

SCHEU

The Scheu of Music

Cello

The SCHEU Cello is our introductory turntable. It was developed with the aim of transferring as many of the virtues of the Premier as possible to a compact and attractive turntable with its own integrated drive unit. We build in the same high quality bearings as in the great Premier.

The Cello is exclusively designed for 9-inch tonearms. The platter is 300 mm in diameter and 30 mm high and weighs about 2.5 kilograms. The dimensions of the shell are 425 by 340 mm. The turntable can also be fitted into very small spaces and is perfectly happy located on wall brackets.

For this devices we recommend SSC's solo bases which are available at your local audio dealer.



The Sound

In terms of sound, the Cello is a truly matured record player that has plenty of power and resolution.





Finish & Versions

Chassis Colour

The Cellos chassis is available in transparent, black, blue, red and white satin-finished.

Platter Colour

The platter comes in matt acrylic as standard. A polished platter is also available upon request, at extra cost.

Accessories: Protective Cover

We offer a protective cover in acrylic transparent fitted for the Cello turntable.

Specifications

Function:

Belt driven turntable

Motor:

Brushless DC-motor

Materials:

Chassis and turntable made of acrylic glass

Speed:

33 and 45 rpm
(fine adjustment via poti)

Tonearm compatibility:

The Cello is designed for 9-inch tonearms only

Platter:

300 mm diameter,
30 mm height,
ca. 2.5 kg

Dimensions:

425 mm wide,
170 mm high,
340 mm deep

Weight:

7 kg

"Scheu's smallest deck offers attractive modern cosmetics, flawless finish and sonically inherits certain gifts from the dearer Premier model. The Cello clearly is no poor man's job. Quite to my surprise, I was particularly impressed with the stock accompaniment of Rega 250 arm and Ortofon's MM Super OM10."

(6moons - 3/2009)

Scheu Analog Turntables

Turntables from SCHEU are synonymous from Berlin to Ushuaia with a most audiophile sound quality, tonal balance and, last but not least, outstanding durability. They are all belt-/string-driven heavyweight turntables and they all use an inverted bearing.

Production quality is of the utmost importance to us, and we work exclusively with suppliers

from Germany. This means that our final products are 'Made in Germany' through and through - apart from the Rega arm on some models, which fortunately is being built to the same exacting standards.

Our turntables are carefully manufactured by hand and offer a suitable solution for everyone, no matter what your requirements, from the beginner's turntable Cello to the very sophisticated reference-beater Das Laufwerk No. 2.



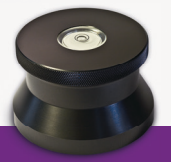
Tonearms



Turntables



Cartridges



Accessories

Most analogue.
The secret, since 1987
handmade in Germany.

www.scheu-analogue.com

 [scheuanalog](https://www.facebook.com/scheuanalog)